

## Fire-rated Aluminum Sliding Doors

**ALUFLAM® has pioneered the innovative solution to what was long considered an impossible dream (and a barrier to truly beautiful commercial architectural design), the development of rugged, versatile aluminum framing technology for fire-rated commercial window applications.**

**The ALUFLAM system has been tested and approved and is available to the architectural and construction communities worldwide.**



### Features:

- The clean, sharp lines of narrow stile aluminum framing
- Large, wire-free glass areas
- Barrier to radiant heat through insulated frame and glazing
- Increased design freedom
- Tested and approved to national and international fire codes
- Multitude of finish options
- Top of the line hardware options - conforming to EU standards
- Simple to install
- High impact resistance
- No corrosion
- Energy efficient
- Reduced noise transmission
- Available in single leaf or double design
- Interior and exterior installation
- Special hardware solutions available
- 30/45/60 min. ratings

### Framing:

The revolutionary all-aluminum framing system is based on high quality extruded profiles, filled with a proprietary insulating compound.

### Glazing:

Aluflam incorporates Vetrotech Saint Gobain clear laminated fire glazing. Glazing conforms to EN 12600 standards for impact while providing excellent clarity and sound reduction. The Aluflam system is approved with both Swissflam and Contraflam glazing which feature superior heat barrier properties.

### Finishes:

Aluflam can offer a number of factory prefinished coatings for its fire-rated aluminum products.

These include:

- Anodizing
- Powder coating
- Architectural paint finishes

### Listings:

These door assemblies are Listed by EU NB laboratories to the EN 1634-1 standard. File numbers: PG10961, PG10923

### Documentation:

Go to [www.aluflam.com/specs/](http://www.aluflam.com/specs/) for:

- CAD drawings
- CSI specifications
- Installation instructions

## Fire-rated Aluminum Sliding doors

Description	Single leaf door	Double leaf door
Designation	SD	DD
Fire rating	30/45/60	30/45/60
Maximum door size (mm.)	1300 x 2150	2100 x 2150
Frame width (mm.)	62	62
Frame depth (mm.)	85	85
Frame weight (kg/m.)	4,42	4,42
Glass weight (kg/m <sup>2</sup> )	34/ 42/ 52	34/ 42/ 52
NB File number	PG10961	PG10923

Note: Maximum door sizes = structural opening

Looking for custom solutions?  
Aluflam can provide a variety of  
custom solutions - both on framing  
and glass. Contact us for details!

## Hardware

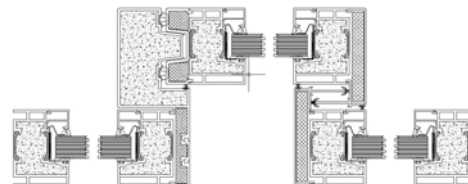
### Hardware Options

Aluflam can offer options such as 250mm kickplates, sliding door automatic devices, electric hardware, wiring, etc. Please inquire with Aluflam sales person for optional hardware brands, configurations and solutions for your project.

## Sidelights / Transoms

The Aluflam fire-rated sliding doors integrate perfectly with the fire-rated storefront framing system

- Fixed transoms
- Fixed sidelights
- Wall integration



## Finishes

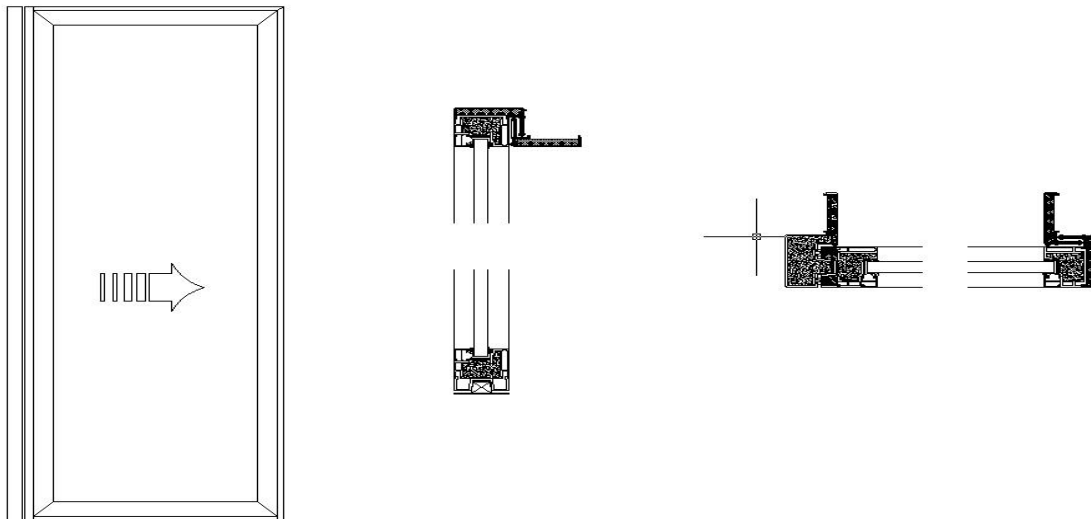
Aluflam can offer a number of factory pre-finished coatings for its fire-rated aluminum products. These include:

- Anodizing
- Epoxy powder coats
- Architectural paint finishes

---

## Single leaf sliding door

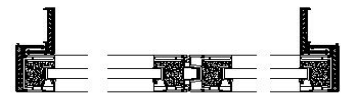
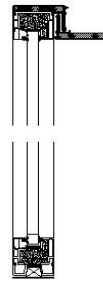
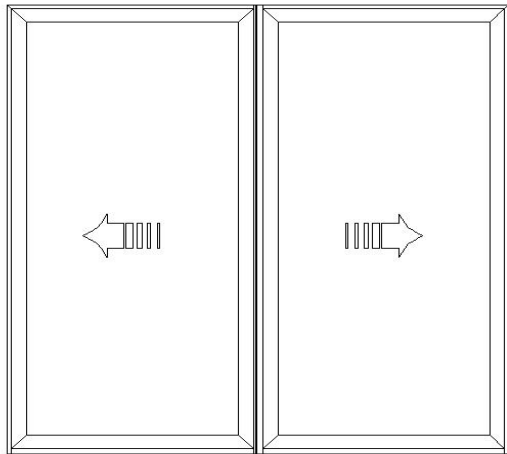
SD



---

Double leaf sliding door

DD



---

See our website for our full range of design options : [www.aluflam.com](http://www.aluflam.com)

Contact: Aluflam A/S - A complete list of approved Aluflam representatives is available online at [www.aluflam.com/contact](http://www.aluflam.com/contact)

E-mail: [info@aluflam.dk](mailto:info@aluflam.dk)